



Stony Brook **Medicine**

# **Fire Safety**

**for Medical Staff Office (MSO), Residents,  
Medical Students and Nursing Students**

Environmental Health & Safety, 4-6783

<https://ehs.stonybrook.edu/programs/healthcare-safety>



## Safeguards in the Event of a Fire

- Know the location of the manual pull stations to activate the fire alarm.
- Know the location of the nearest fire extinguishers in your work area.
- Never block fire or smoke doors. These close automatically on fire alarm activation.
- For additional information, refer to Admin Policy EC0072, Fire Plan.





## What to do if you see fire or “visible” smoke?

Follow the **RACE** Procedure

### ■ **R - Remove**

- Remove anyone from immediate danger, clear the corridor, and close all doors

### ■ **A - Alarm**

- Activate a pull station and call 911 to report exact location and magnitude of the situation (Offsites – call 911)

### ■ **C - Confine**

- Confine the fire by closing all doors especially the fire room

### ■ **E – Evacuate/Extinguish**

- Evacuate persons from fire compartment
- If it is safe to do so, utilize a fire extinguisher

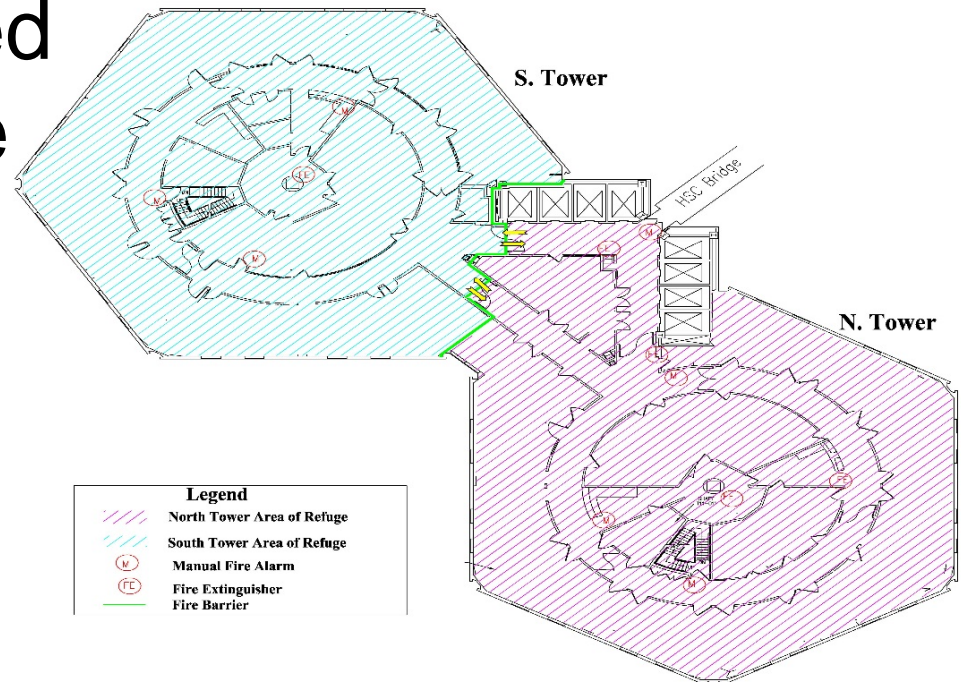
**NOTE:** Refer to evacuation plans posted in unit for fire compartment location and fire plan information.



- North and South Towers are separated by fire doors and fire walls



## T11 FIRE EVACUATION PLAN



- Each tower is an evacuation area of refuge, divided by the green line which is a fire barrier
- For fires in either tower, evacuate patients past the smoke barrier to the other tower.
- Stage in the area of refuge until fire area is declared safe or further evacuation is deemed necessary by the incident commander

On Network levels 4, 5, & 6 – look for Smoke or Fire Door sign on door to locate adjacent area of refuge



## Evacuate to Area of Refuge (Smoke/Fire Doors)

Moving patients from one smoke compartment to another on the same floor puts them into “**areas of refuge**”



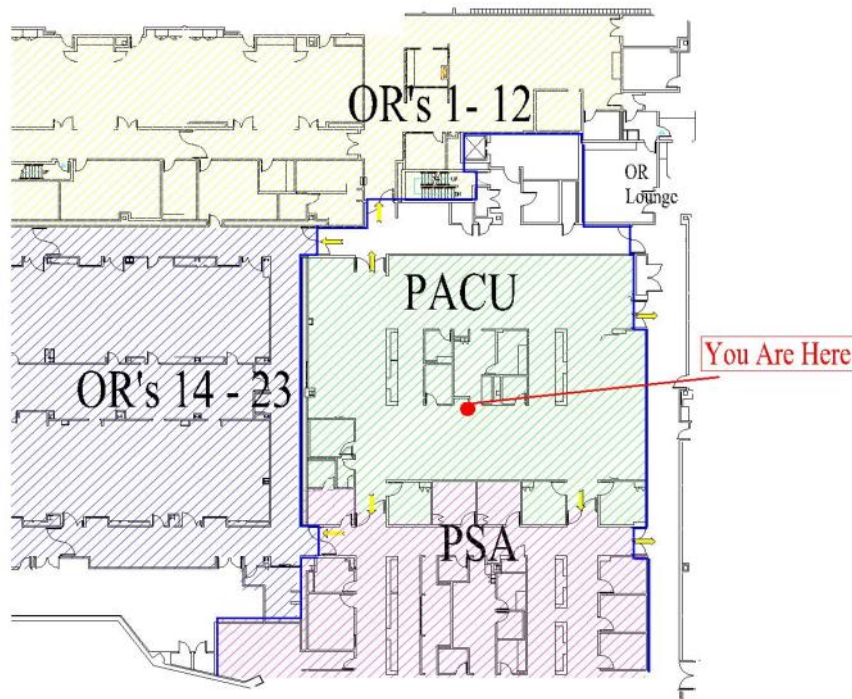


- ❖ Moving patients to other floors or from the building is a **last resort**
- ❖ This is done in coordination with the fire department





## PACU Fire Evacuation Plan



- Depending on fire location, evacuate patients to adjacent smoke compartment, defined on drawing by blue lines which are fire rated barriers.
  - To OR's 1 - 12
  - To OR's 14 - 23
  - To Main corridor
- Stage in area of refuge until the Incident Commander (IC) deems area is safe to return to.
- If further evacuation is necessary, move past next marked barrier.
- Full evacuation to the outside is a last resort and will be by the order of the I.C.

Each area has an  
**EVACUATION  
PLAN**  
posted.

Find and become  
familiar with your  
area's plan



- In most cases the ELEVATORS will operate normally during a general fire alarm.

***NEVER use an Elevator  
during a Fire Alarm***

- If an elevator lobby detector activates, the elevators will return to level 5 and go into a standby mode for FD use.





## Manual Pull Stations

- Activation will sound alarm as well as notify University Police (UPD) who notifies the FD.
- Utilize this device when you have a visible smoke or fire condition.
- Know locations of pull stations





- Fire and/or “visible” smoke; call 911, notify operator of “Code Red” and provide location
- If you have a fire in a patient’s room and have to evacuate the patient, call out “Code Red” for someone to activate the fire alarm. Do not call out “Fire!”
  - If you hear “Code Red” called out, pull fire alarm and call 911, giving your location for the code red.



## CODE GREEN

Indicates that the emergency is over and normal activities may continue

## “CODE GREEN”

Will be announced over the PA system 3 times.



## Fire Alarm Signaling Method

### **\*Pre-Recorded Voice Messages\***

Based on area of alarm activation, fire alarm will broadcast a voice recorded message stating Code Red with the area in alarm.

#### **Example announcement of fire alarm originating on T18 south:**

- ❖ T18 N&S: Strobes flash, alert tone sounds followed by announcement:  
**"Code Red 18 south"**
- ❖ T17 N&S: Chimes sounds followed by announcement:  
**"A Code Red is being investigated on 18 South"**
- ❖ T19 N&S: Chimes sounds followed by announcement:  
**"A Code Red is being investigated on 18 South"**

Note: Fire alarm strobes will be activated in area of alarm only until the code green is called.



**Fire alarm strobe**



All departments must have a designated Fire Warden and alternate for each work shift.

Fire Wardens who attend training learn to:

- assist in search for location of fires
- report this information to emergency personnel
- guide patients, staff and visitors to safe areas during an alarm or actual fire.

Contact your supervisor to volunteer as a Fire Warden.



## All Medical Staff will react to any fire or fire alarm

- Assist nursing staff and be under direction of Fire Warden or Charge Nurse
- Clear halls, close doors, evacuate patients (patient evacuation not necessary for fire alarm w/no fire/smoke present)
- Remain in evacuation area, providing care to evacuated patients





Keep doors clear

Don't store materials in stairwells

Close all doors to confine the fire





## Types of Extinguishers

Dry Chemical Extinguishers  
(ABC extinguishers)

are used for all types of fires:

- Class A (combustibles)
- Class B (flammable liquids)
- Class C (electrical equipment)



**Know locations of your nearest extinguishers!**

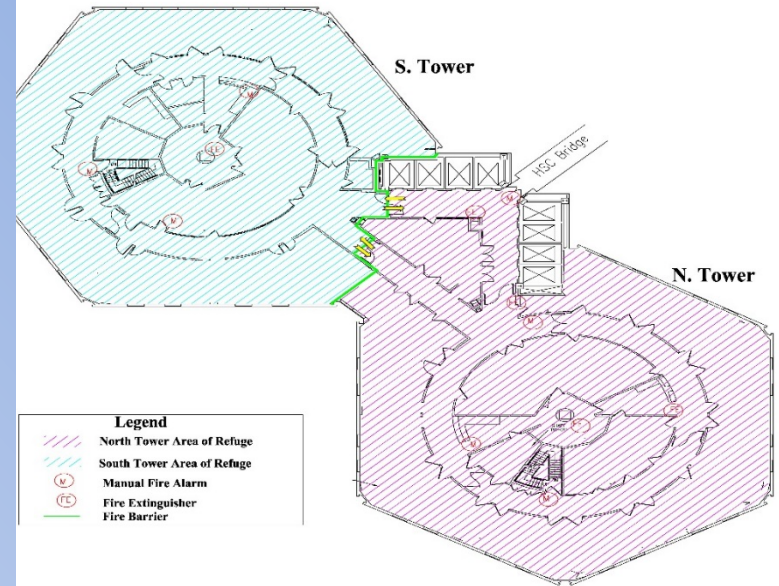


# Extinguish or Evacuate

Close doors behind you!



## T11 FIRE EVACUATION PLAN



- Each tower is an evacuation area of refuge, divided by the green line which is a fire barrier
- For fires in either tower, evacuate patients past the smoke barrier to the other tower.
- Stage in the area of refuge until fire area is declared safe or further evacuation is deemed necessary by the incident commander

Use a portable fire extinguisher only if the fire is small and can be brought under control using **one** extinguisher!



**Pull the Pin** & stand back 6-10 feet.

**Aim nozzle at the base** of the fire.

Hit the fuel not the flames!

**Squeeze the handle** to depress the button and release the agent.

**Sweep nozzle** from side to side until completely out. Keep an eye on it in case it re-ignites.



# Oxygen Cylinder Safety

- **Secured** in a rack or holder
- **Segregated** – Empty or Full/Partially Full
- Location **Labeled** – Empty or Full/Partially Full
- To **no more than 12 total** in a smoke compartment

*For more information: Admin EC0028,  
Compressed Medical Gases*



*Cylinders, if handled improperly, could be propelled with enough force to blast through a wall.*





## Proper Oxygen Cylinder Transport on a Wheelchair







# Extinguishing Oxygen Fed Fires

- Zone valves shut off flow of O<sub>2</sub> to designated rooms
- Assess situation:
  - What are patient needs?
  - Is fire fed by O<sub>2</sub>?



## KNOW YOUR VALVE LOCATION

**Anyone can shut valve after determining that patients served by that zone will not be adversely affected by oxygen shutoff**



- Contact EH&S at 4-6783.
  - Ask to speak to a staff member in the Healthcare Safety team!
- Email us at *ehsafety@stonybrook.edu*
- Review Admin and EH&S P&Ps on hospital intranet under “Resources”.
- For additional reference material go to:  
<https://ehs.stonybrook.edu/programs/healthcare-safety>





What does the fire alarm signal of bells followed by code red announcement indicate?

- a. Full building evacuation is required
- b. Fire alarm is in another area and be prepared for evacuation
- c. Fire alarm is in your area: follow RACE

Answer: C



What does the fire alarm signal of bells followed by code red announcement indicate?

- a. Full building evacuation is required
- b. Fire alarm is in another area and be prepared for evacuation
- c. Fire alarm is in your area: follow RACE



If you observe a fire in a patient's room and need to evacuate the patient, you should also:

- a. Call out “Code Red” for someone to activate the fire alarm
- b. Call out Code Green for someone to activate the fire alarm
- c. Do nothing. You have already done all that is expected of you.

Answer: A



If you observe a fire in a patient's room and need to evacuate the patient, you should also:

- a. Call out “Code Red” for someone to activate the fire alarm
- b. Call out Code Green for someone to activate the fire alarm
- c. Do nothing. You have already done all that is expected of you.

Answer: A