

Evaluation of Resident Readiness for the New 2026 ABEM Certifying Examination

Alexon Munson-Catt, MD, Matthew Suzor, MD, Christine Ahn, MD

Background

- The American Board of Emergency Medicine (ABEM) certification process for board eligible emergency physicians is comprised of two sections: The Qualifying Examination & The Oral Examination
- In 2026, ABEM will be retiring the Oral Examination and, in its place, will be implementing the Certifying Examination, comprising of:
 - 4 15-minute clinical care cases
 - Clinical Decision Making
 - Prioritization
 - 6 10-minute Communication and Procedural Cases
 - Reassessment/Troubleshooting
 - Difficult Conversations
 - Managing Conflict
 - Ultrasound
 - Procedures
 - Patient-Centered Communication
- At the time of the study, there is a paucity of resources, preparation material covering the new 2026 ABEM Certifying Examination, except what is found on the ABEM Website
- This study aims to create a simulated ABEM Certifying Examination and evaluate perceived resident readiness in taking the examination

Methods

Study Design

- Create a high fidelity simulated ABEM Certifying Examination based on the available examination content ABEM has provided on their website
- Pre-Survey evaluating residents' perceived knowledge of the new changes as well as their perceived readiness to take the 2026 ABEM Certifying Examination
- Post-Survey evaluating residents' changes in confidence of their perceived examination knowledge and perceived readiness

Study Population and Setting

- Convenience Sampling of Stony Brook University Hospital Emergency Medicine Residents Participating in the Simulated ABEM Certifying Examination
- High fidelity simulation in the Stony Brook University Clinical Skills Center

Data Source and Collection

- Pre- & post-survey collection via qualtrics survey collection program
- Survey disseminated via email and filled voluntarily
- Perceived readiness was analyzed with a response from very unprepared to very prepared

Study Outcome

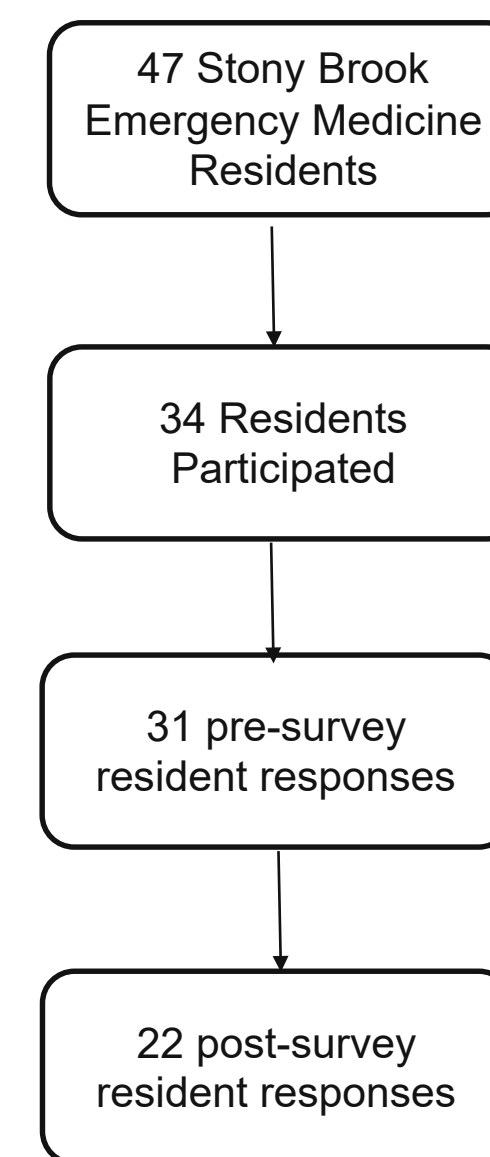
- Comparing residents' perceived knowledge of the content tested on the ABEM 2026 Certifying Examination
- Comparing residents' perceived readiness in taking the ABEM 2026 Certifying Examination
- Evaluating for a correlation of ITE scores and residents' perceived readiness

Data Analysis

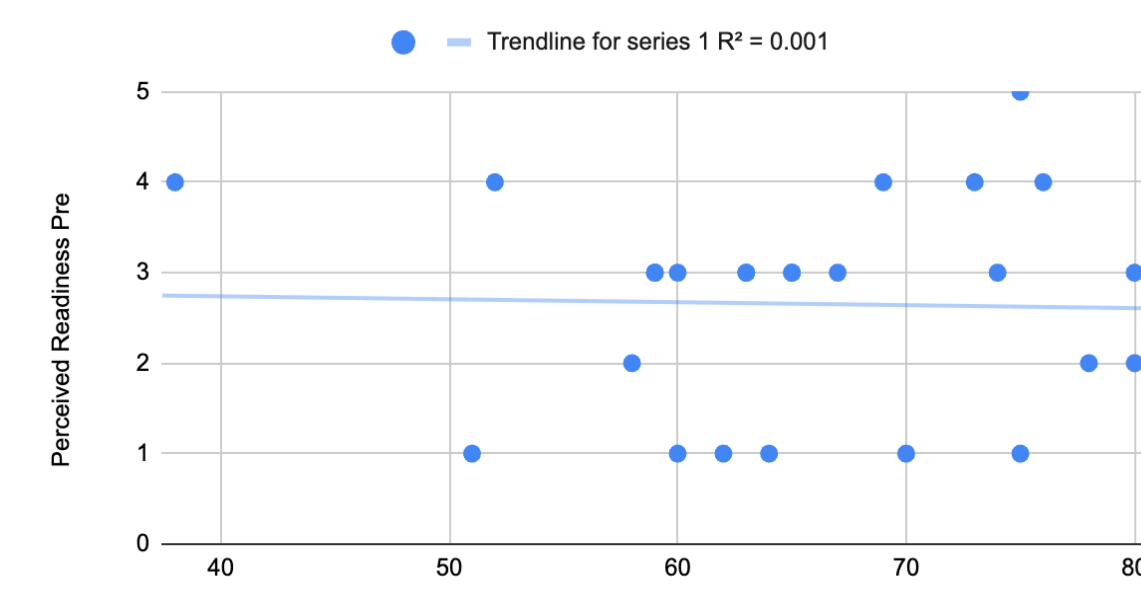
- Data was collected from survey and placed into excel
- All responses on perceived readiness were converted to a numerical range based off Likert scale
- Perceived readiness was then compared to ITE scores to evaluate for any correlation between score and perceived readiness
- Data was also compared between PGY year and perceived readiness, while also considering whether each simulation was preformed or observed
- Pre and post survey responses were matched in a 1-1 based off of PGY year and ITE score and then a Paired T-Test was preformed to look for a statistically significant improvement in perceived readiness

Results

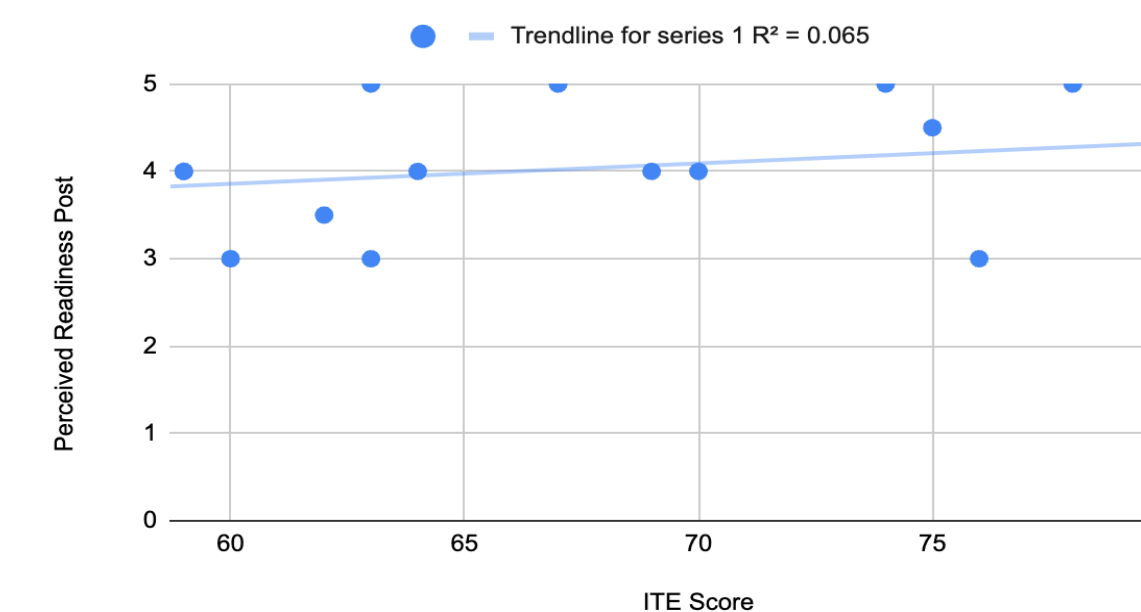
Figure 1: Flow of Study Patients



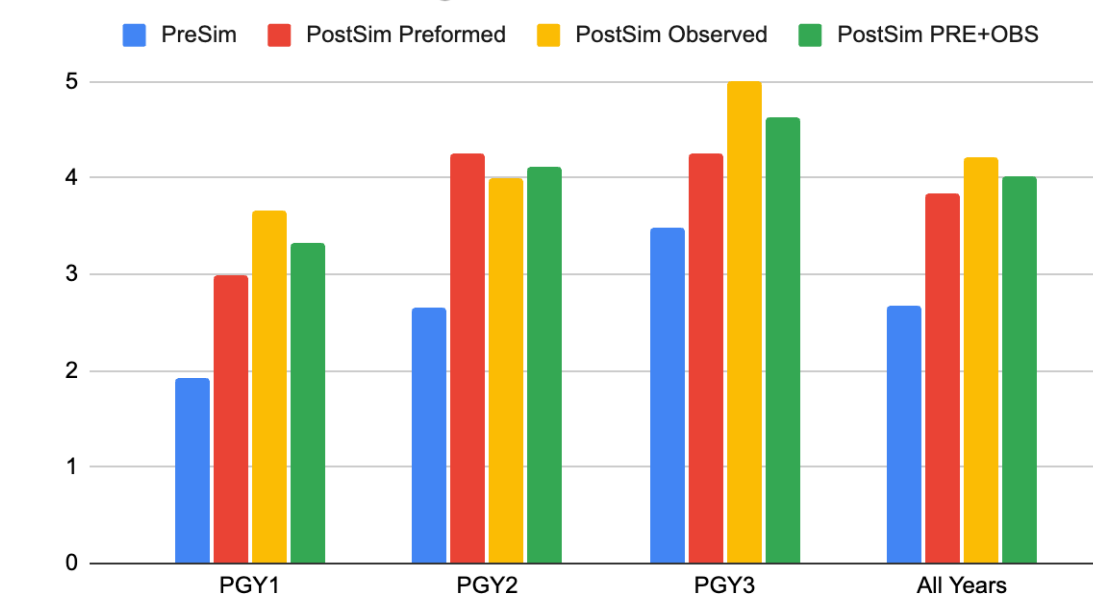
Perceived Readiness Pre vs. ITE Score



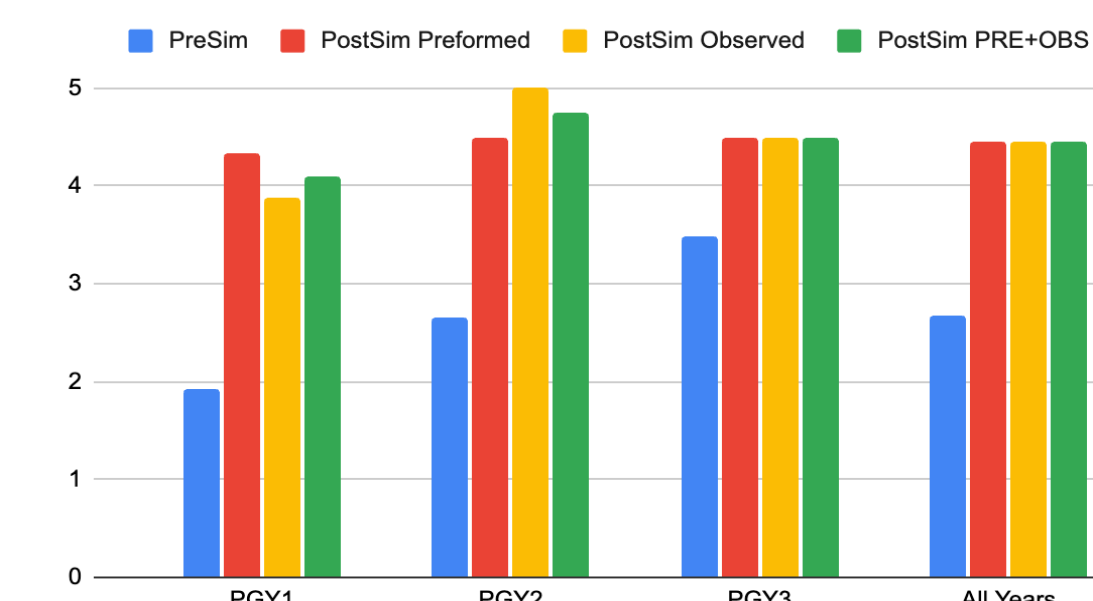
Perceived Readiness Post vs. ITE Score



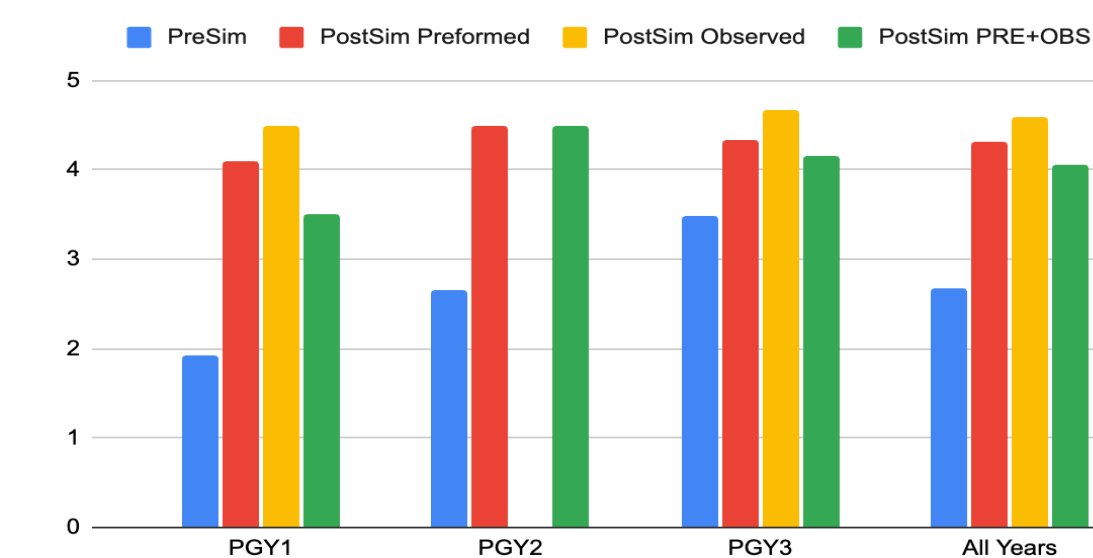
Clinical Decision Making



Difficult Conversations



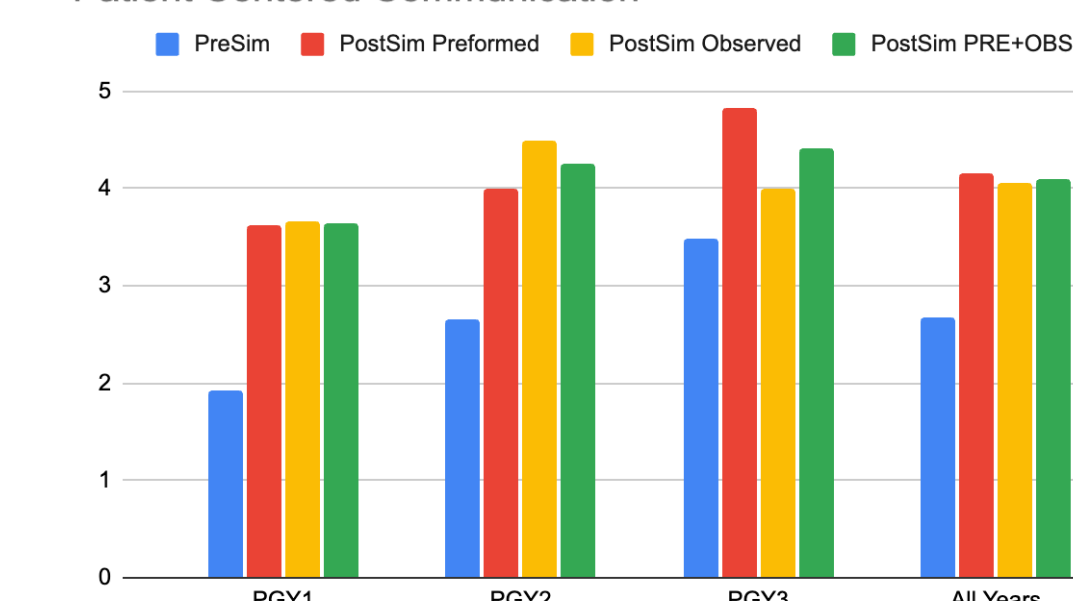
Procedures



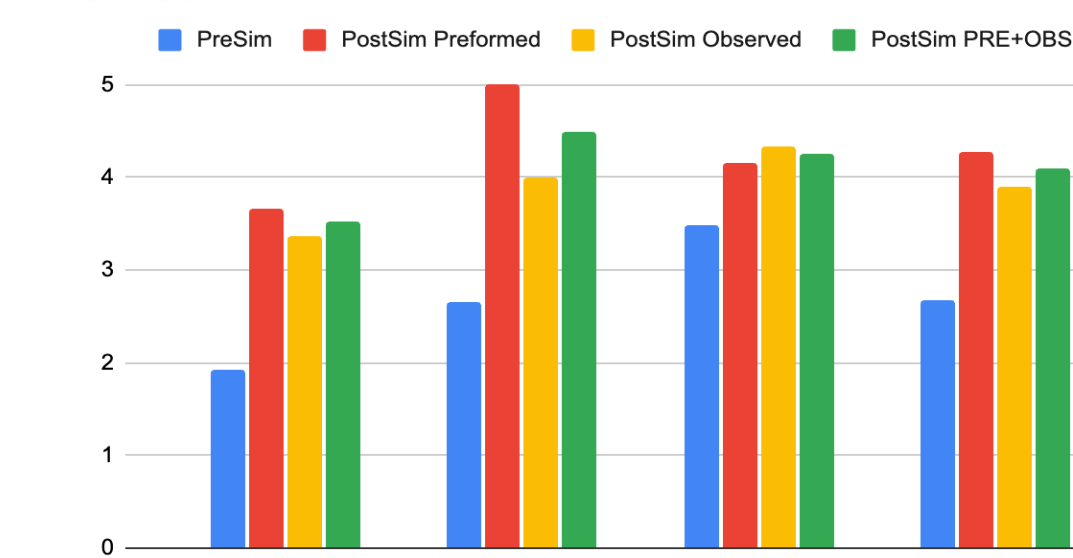
Prioritization



Patient Centered Communication



Ultrasound



Discussion

Perceived Readiness Vs ITE

- Perceived readiness pre-simulation compared to ITE score had R-squared of almost 0, showing ITE had no effect on the variance of perceived readiness
- Post simulation R-squared showed a slight increase but remained low, showing that ITE represents a low portion of the variance of perceived readiness

Perceived Readiness pre-vs-post simulation

- All six simulated cases showed a increased in perceived readiness compared to pre-simulation
- When comparing observation vs performance for each of the six cases, little difference in perceived readiness was noted.
- Pre-simulation readiness was noted to increase in a stepwise fashion for each year of residency.
- Post-simulation readiness increased from 1st year to 2nd year but stagnated between 2nd and 3rd year.

Significance

- When ITE scores and years were matched in pre-vs-post survey, a significant increase in perceived readiness (P=0.001) was noted on Paired T-Test

Future Direction

- Limited knowledge of future Certifying Exam as it has yet to release
- What knowledge we do have is currently limited to what ABEM has provided
- Case summaries and sample case videos available on ABEM website
- 2025 graduates will be the first to complete Certifying Exam
- Post-examination, simulation will be able to be more fine-tuned to help replicate available scenarios
- Future study reassessing residents that took this simulation practice certifying exam and evaluating it for usefulness
- Compare perceived readiness to pass rate
- Expanding simulation to other emergency medicine residencies to see if it is generalizable

Strengths and Limitations

Strengths

- Statistical increase in perceived readiness
- High pre-simulation survey response
- New case practice offered to residents to learn and grow from

Limitations

- Post-simulation response less robust
- Unable to compare all pre-simulation to post-simulation in a 1-1 comparison due to decreased responses
- Low available data on the certifying exam with no "real life" experience limiting true evaluation of simulation
- Limited to one residency class

References

- "ABEM | Certifying Exam Content." *ABEM*, 6 May 2025, www.abem.org/get-certified/certifying-exam/certifying-exam-content/.
- Hot Seat – with John Kendall for the US Component of ABEM Certifying Exam." *Acep.org*, EM Ultrasound Section, 2025, www.acep.org/emultrasound/newsroom/may-2025/hot-seat-with-john-kendall-for-the-us-component-of-abem-certifying-exam.
- Lopez, Andres MD , Randhawa, Jasmeen K. MD, Manfrini, Denise A. MD , Seyller, Hannah MD. "ABEM | Certifying Exam Content." *ABEM*, 6 May 2025, www.abem.org/get-certified/certifying-exam/certifying-exam-content/.