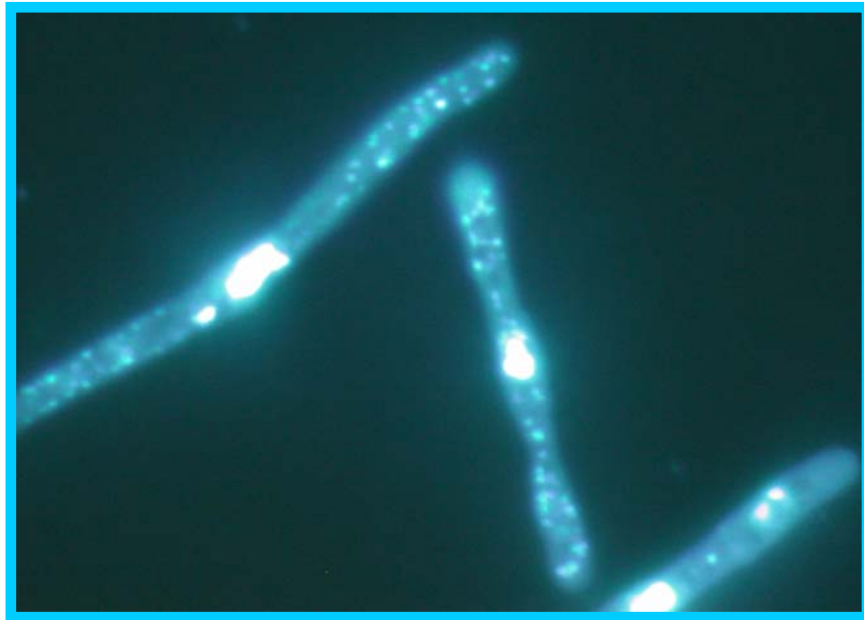

Graduate Program in
MOLECULAR GENETICS & MICROBIOLOGY

School of Medicine ❖ Stony Brook University

DISSERTATION DEFENSE

Effects of checkpoint mutation on DNA
replication and re-replication within fission yeast



Katie L. Mickle

Advisor: Dr. Janet Leatherwood

Monday, August 6, 2007 ❖ 12 noon
Life Science Building, Room 038