

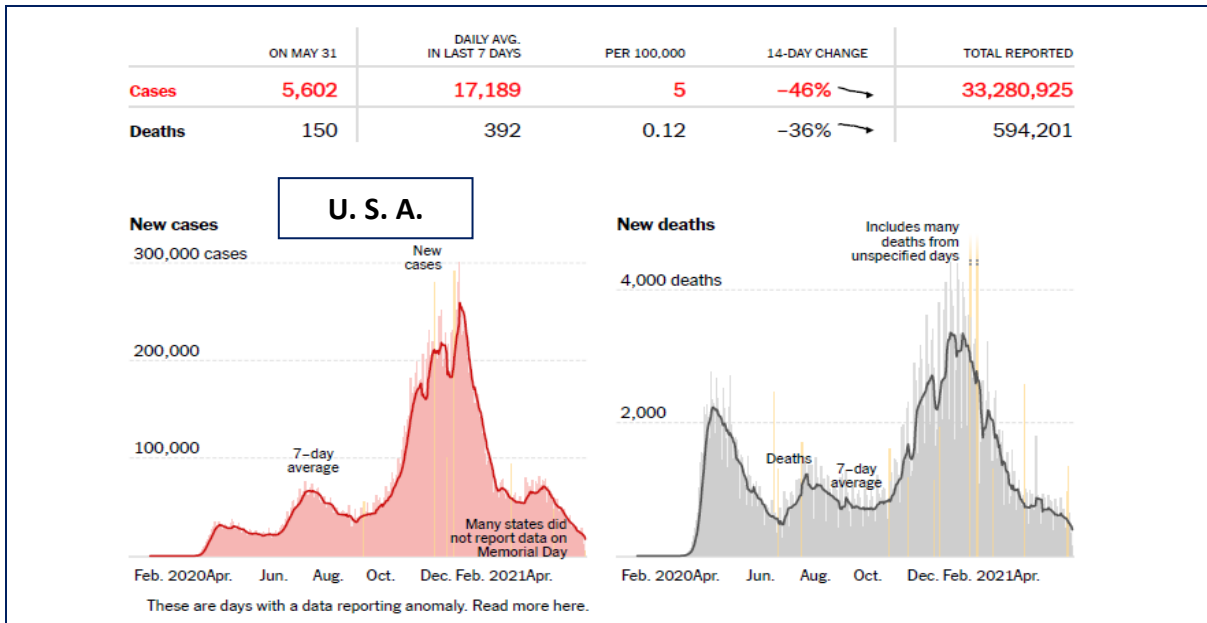
# COVID-19 UPDATE –TUESDAY, JUNE 1<sup>ST</sup>, 2021

Dear Members of the DoM Community,

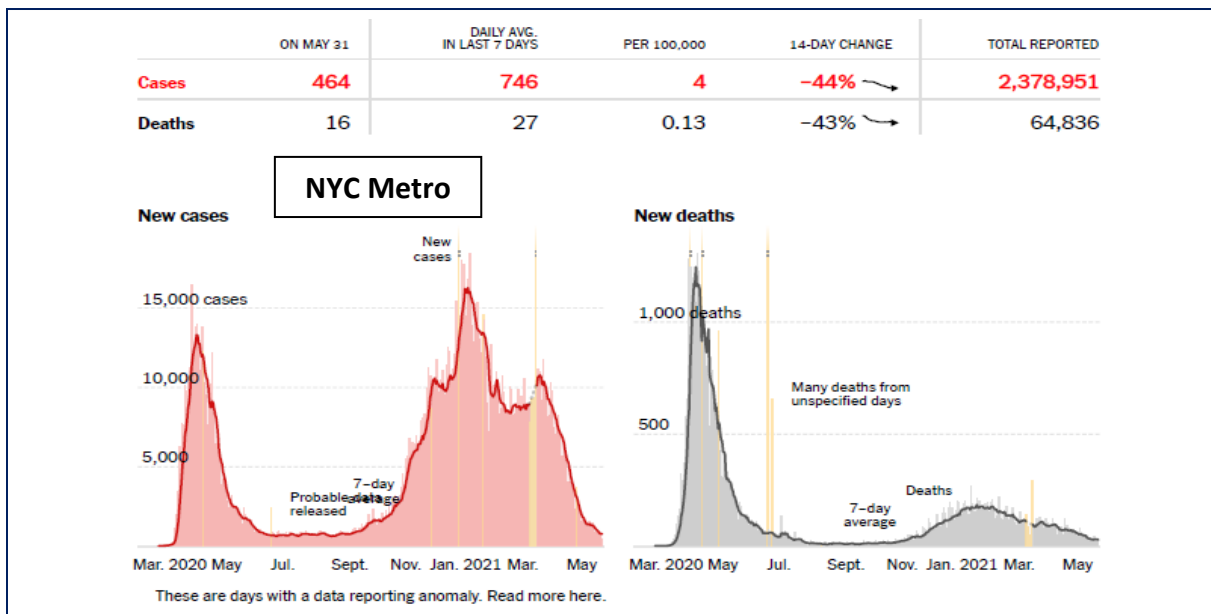
Good day to you on this first day of June. I hope everybody had a good Memorial Day weekend, despite the weather. Here is what happened to the COVID-19 pandemic last week. As the pandemic is winding down (and hope it stays down), this will be my last newsletter unless the pandemic flares up again (hope not). At this time, I want to thank everyone in the department for his or her effort in combating the disease and taking excellent care of our patients. As the direction by which the pandemic will take is still uncertain, please do continue to use precaution and stay safe.

## 1. Nationwide COVID-19 Data

**Daily new case numbers in the U.S. continued to decline and are their lowest levels since the pandemic began.**

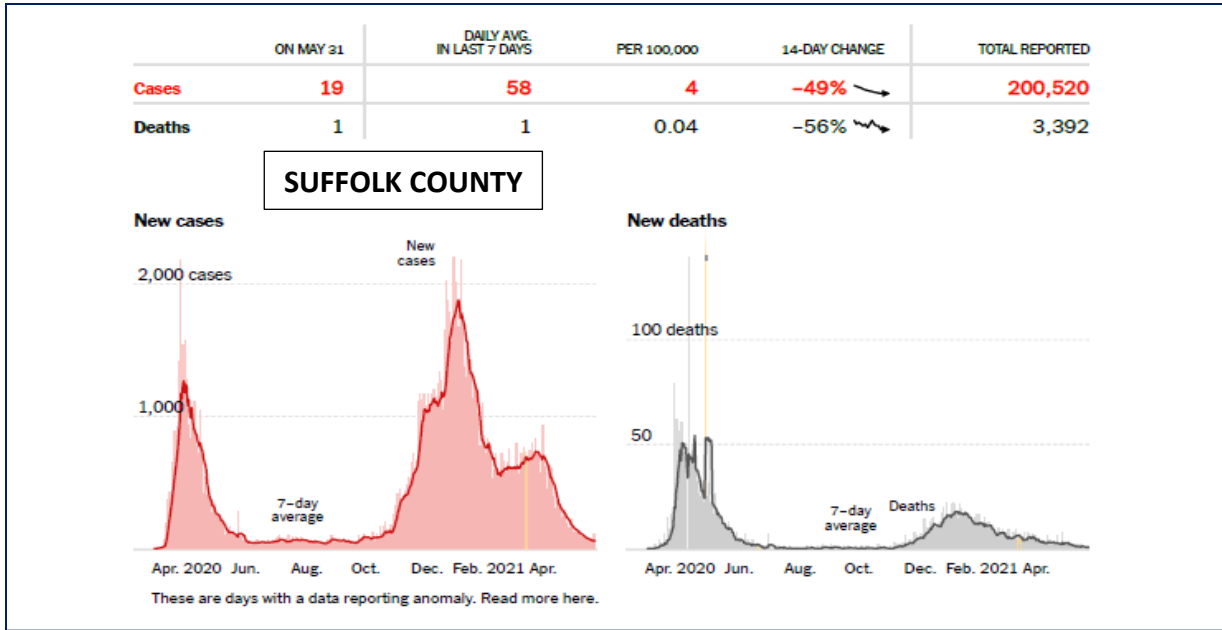


## 2. New case numbers in the New York City metro area are following the same trend as the U.S.



**Metro area definition** - The New York City area metro area has a population of 19.8 million people and contains Bergen County, Essex County, Hudson County, Hunterdon County, Middlesex County, Monmouth County, Morris County, Ocean County, Passaic County, Somerset County, Sussex County and Union County in New Jersey; Dutchess County, Nassau County, Orange County, Putnam County, Rockland County, Suffolk County, Westchester County and New York City in New York and Pike County in Pennsylvania.

3. Case numbers in Suffolk County have also continued to decrease, now at a 7-day average of 4 per 100,000 population. This is a decrease of another 1 per 100,000 from a week ago.



**COVID-19 Testing Results in Suffolk County on May 30:**

- 6,019 COVID-19 tests were administered.
- 19 new cases were reported.; 7-day average = 58, a decrease of 21 from one week ago.
- 200,520 total cases have been reported since March of 2020.
- Seven-day average test positivity rate = 0.7%, a decrease of 0.1% from a week ago.

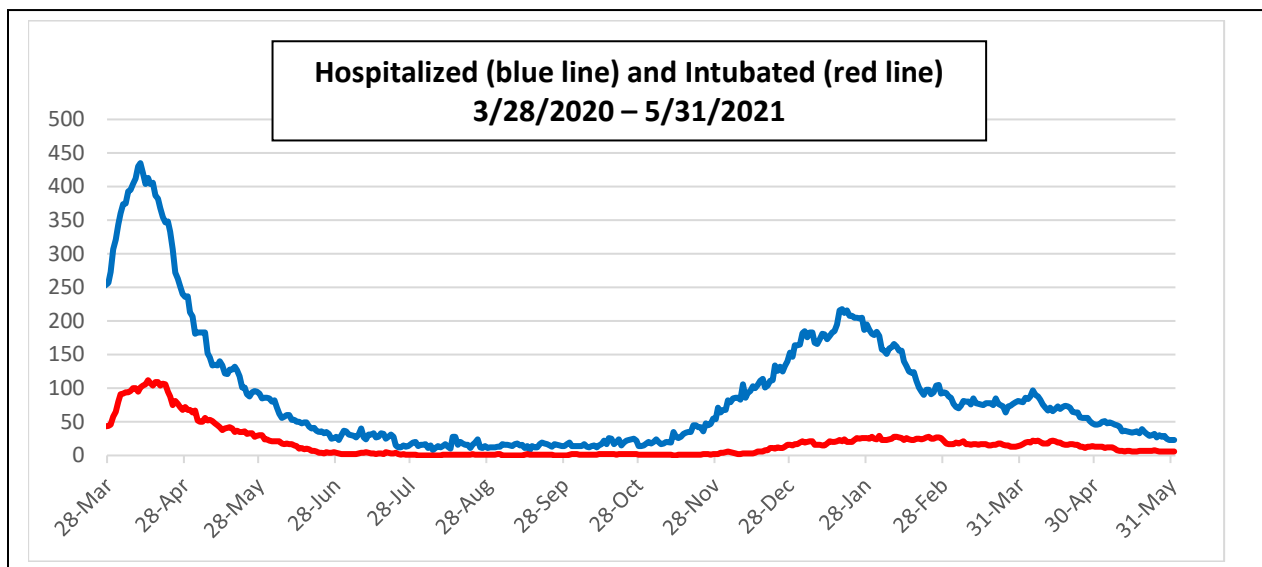
**Fatalities:**

- 3,392 total fatalities, an increase of 6 from one week before.

**COVID-19 Hospitalizations:**

- 72 individuals were hospitalized, a decrease of 36 from one week before.
- 21 patients were in the Intensive Care Unit (ICU), a decrease of 2 from a week ago.

4. Daily COVID-19 Hospitalization Data in SBUH

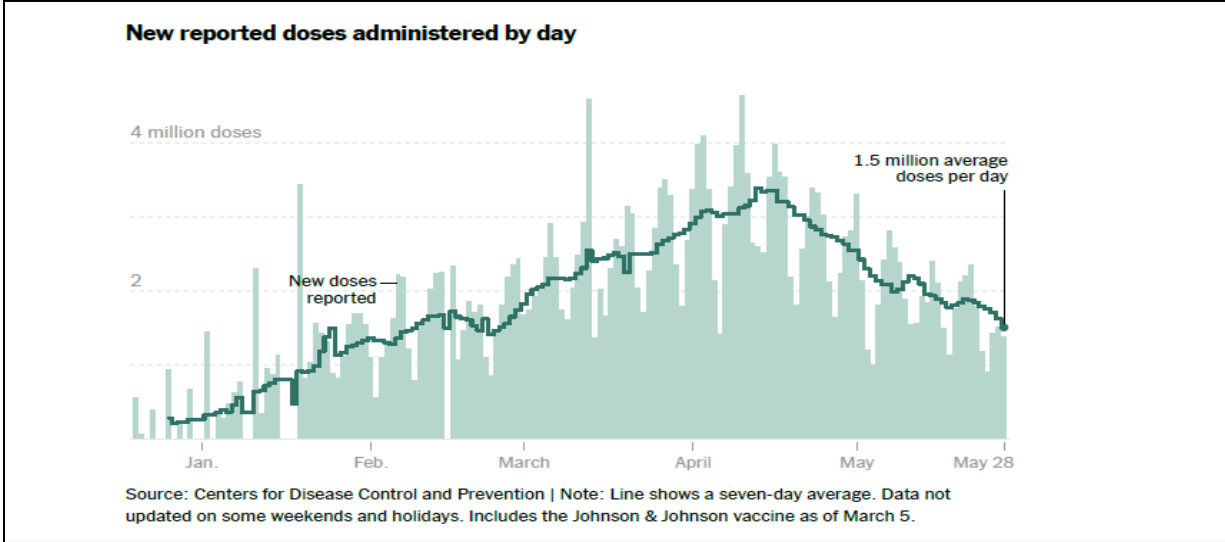


At midnight Monday, May 31, SBUH census is as follows (see figure above for all-time trend of hospitalizations).

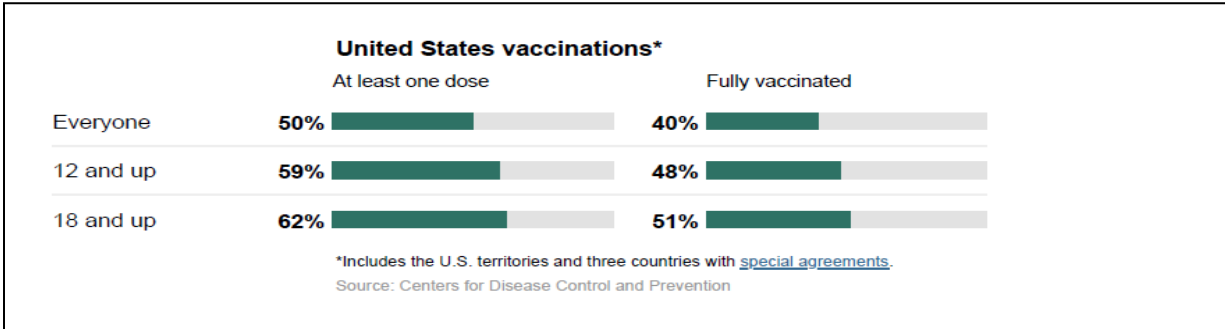
- 23 COVID + inpatients; 7-day average = 26, a **decrease of 6** from one week before.
- 9 patients were in ICU level of care; 6 on ventilators; 5 in ICR.
- Total hospital census = 575; Med/Surg = 450 (102%).

**5. Vaccination Program Update** (sources = CDC, NYS DOH, and NYT)

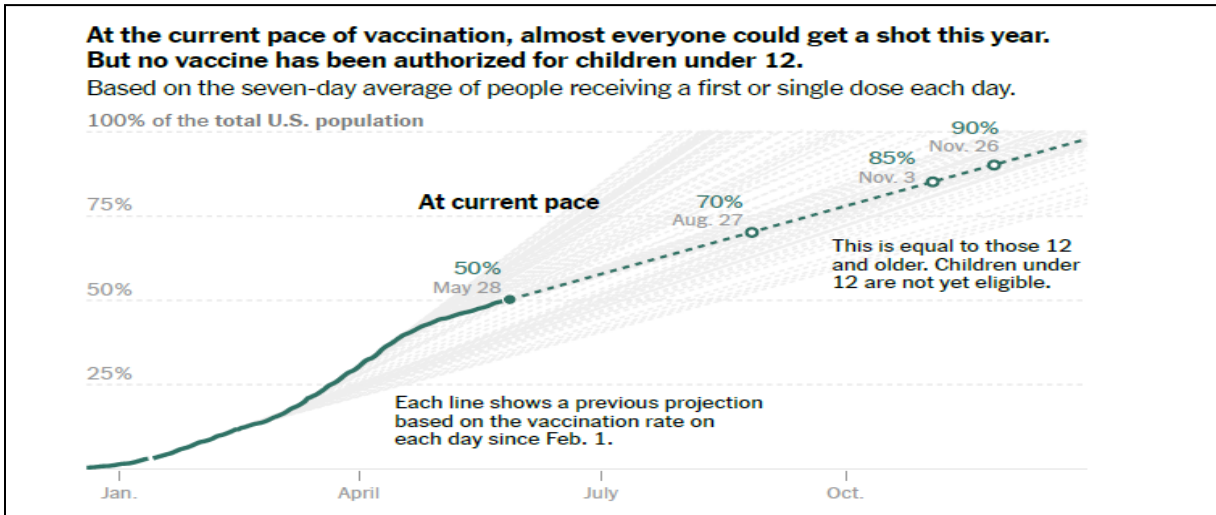
- National trend for vaccination is here.



- Rate of vaccination in the U.S. is here (NYS and Suffolk county are at 55% of everyone at least one shot).



- The projection below only shows the share of the total population with at least one shot based on the current rate of newly vaccinated people. It provides a rough indication of when the virus's spread could begin to stall.



That's about it in the world of COVID-19 pandemic last week. As we begin resuming 'normalcy' over the summertime, please be reminded that COVID-19 is still with us so do remain vigilant to keep safe and stay healthy.

Sincerely Yours,

A handwritten signature in black ink, appearing to read 'VW Yang', written in a cursive style.

Vincent W. Yang, MD, PhD

Simons Chair of Medicine

Professor of Medicine, Biomedical Informatics, and Physiology and Biophysics