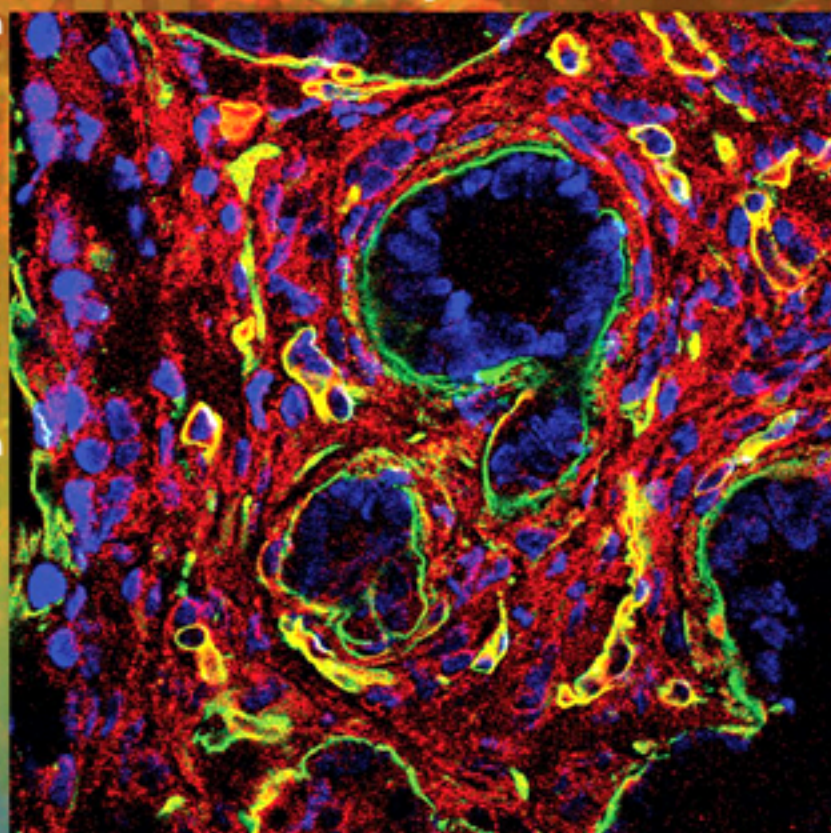


# Cancer Center and Department of Molecular

Stony Brook University



Genetics and Microbiology

## Tumor:Host Interactions Symposium 2008

Tuesday April 29th 10.00am – 4.45pm  
Wang Center

### Speakers:

9.30am **Welcoming Coffee Service**

10.00am **Opening remarks**

10.15am **Mina Bissell**

Lawrence Berkeley National  
Laboratory

Genes and the microenvironment: The two  
faces of breast cancer

10.55am **John Condeelis**

Albert Einstein College of Medicine  
Breast tumor invasion: tumor cell  
chemotaxis in a macrophage-dependent  
microenvironment

11.35am **Stephen Weiss**

University of Michigan  
Membrane - Type Matrix Metalloproteinases and  
the Cancer Cell Invasion

12.15 **Lunch Break (1hr 30min)**

1.45pm **Lisa Coussens**

UCSF

Tissue-Specific Mechanisms Regulating  
Inflammation-Associated Epithelial  
Carcinogenesis

2.25pm **Richard Bucala**

Yale University

MIF and the Inflammatory Pathogenesis  
of Cancer

3.05pm **Coffee Break (20 min)**

3.25pm **Gerard Evan**

UCSF

How Oncogenes maintain tumors and their  
microenvironment

4.05pm **George Yancopoulos**

Regeneron

Drug Discovery in Biotech: From Traps  
to VelocImmune

Phone 631.632.8800 for information on the Symposium.  
Or go to [www.mgm.stonybrook.edu](http://www.mgm.stonybrook.edu)

STONY  
BROOK  
UNIVERSITY