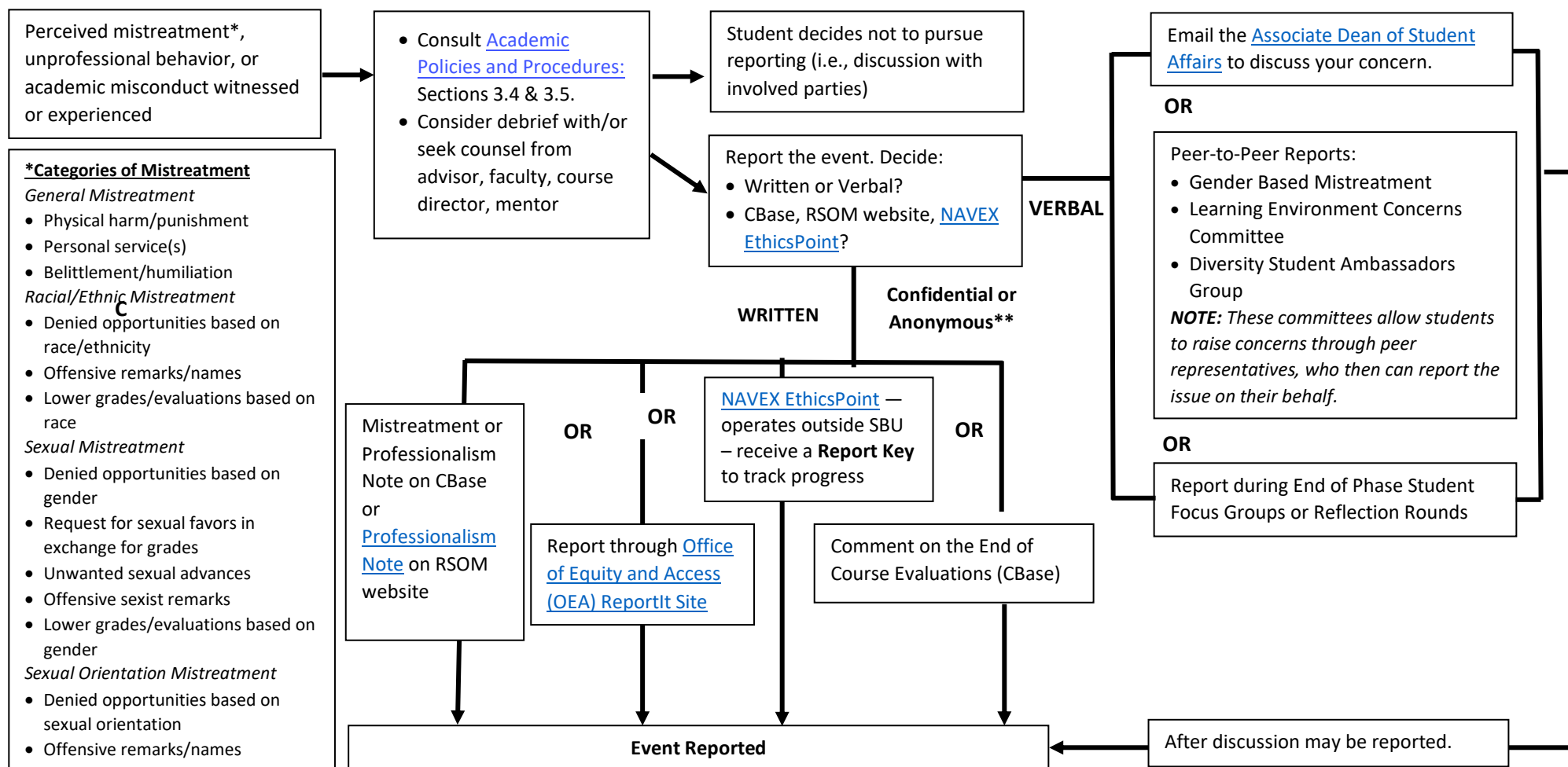


Figure 1: Mechanisms for Reporting a Learning Environment Concern/Event



**** Confidential** – Your identifying information will be shared only with the Associate Dean of Student Affairs and the Vice Dean for UGME, and with members of the Committee on Student Affairs (CoSA) only after discussion with you and your permission.
Anonymous – No one can trace the source of this submission.